

## Template for Evidence(s) UI GreenMetric Questionnaire

University : IFSULDEMINAS  
Country : BRAZIL  
Web Address : <https://www.ifsuldeminas.edu.br/index.php>

### [1] Setting and Infrastructure (SI)

#### [1.9] Total Area on Campus Covered in Forest Vegetation (m<sup>2</sup>)

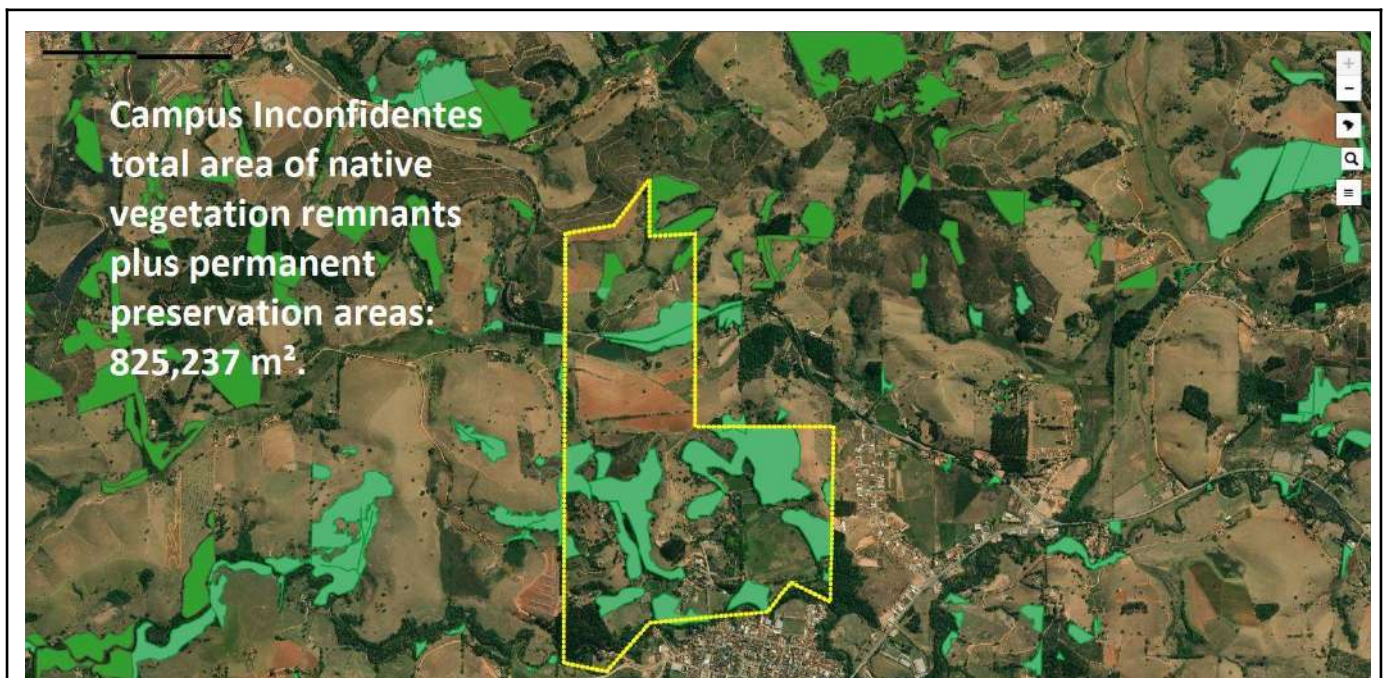


Figure 1: Inconfidentes Campus - 825,237 m<sup>2</sup>.

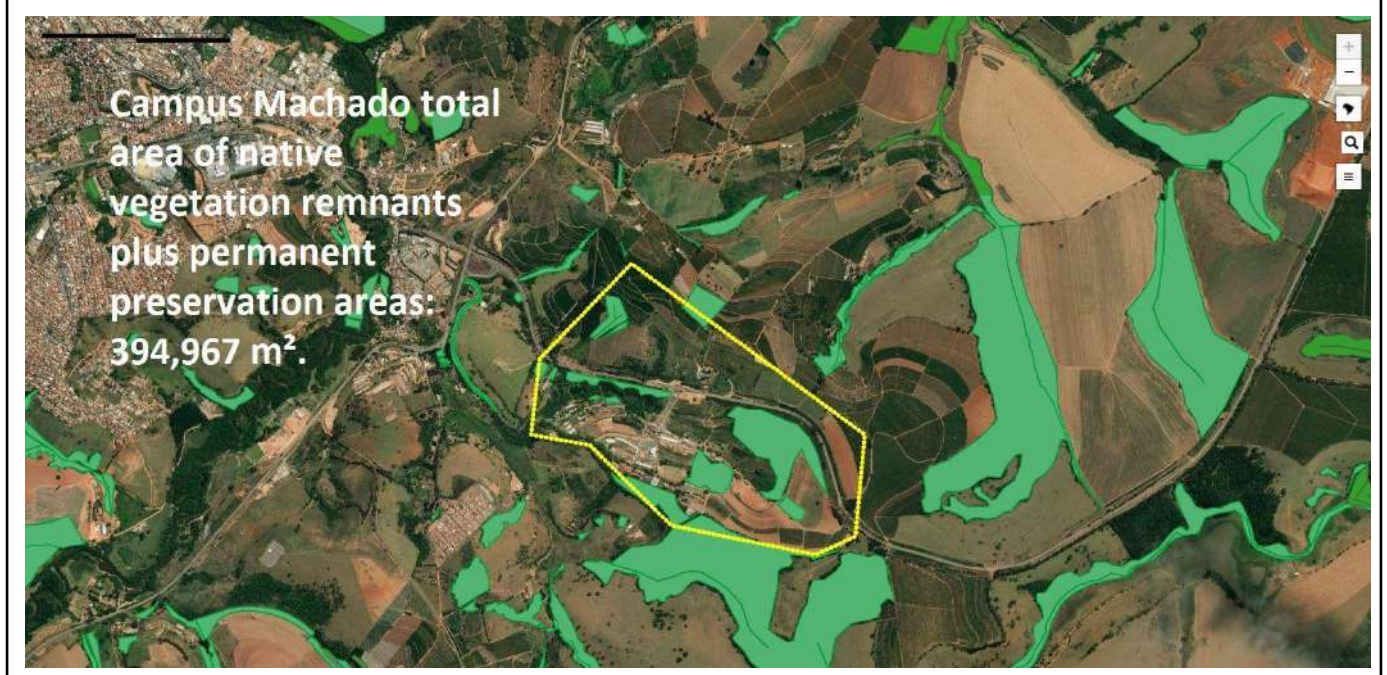




Figure 2: Machado Campus - 394,967 m<sup>2</sup>.

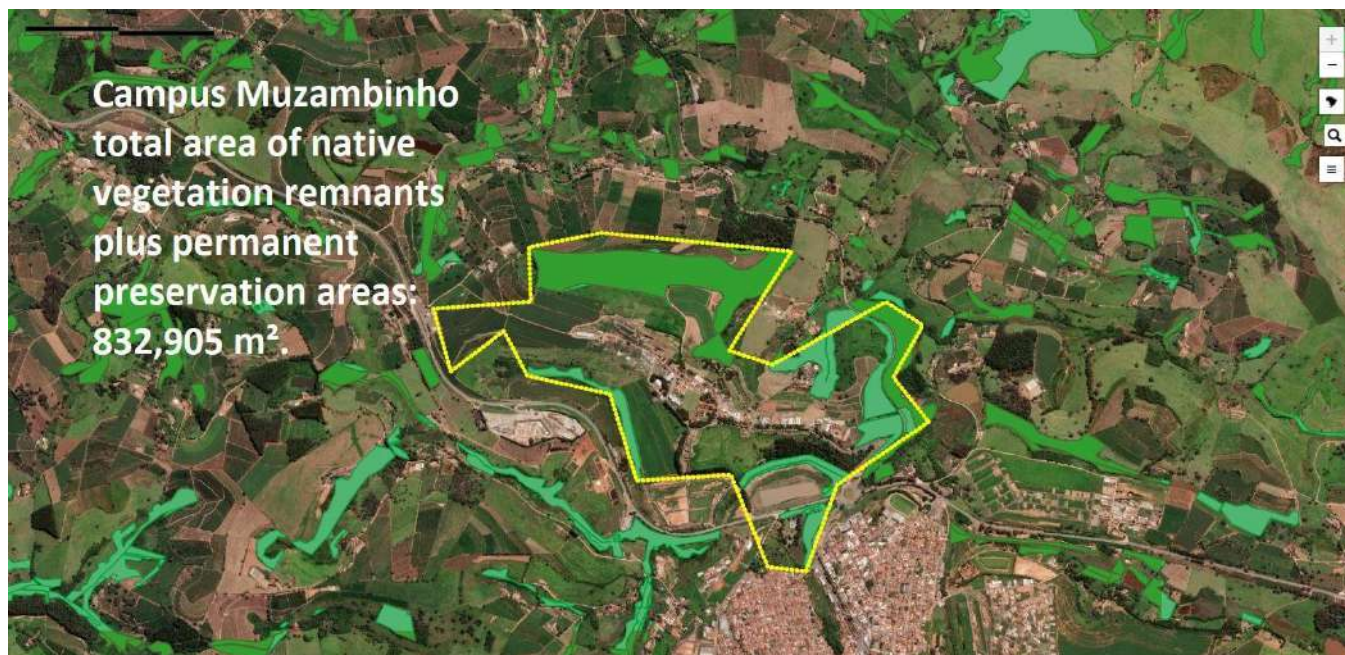


Figure 3: Muzambinho Campus - 832,905 m<sup>2</sup>.

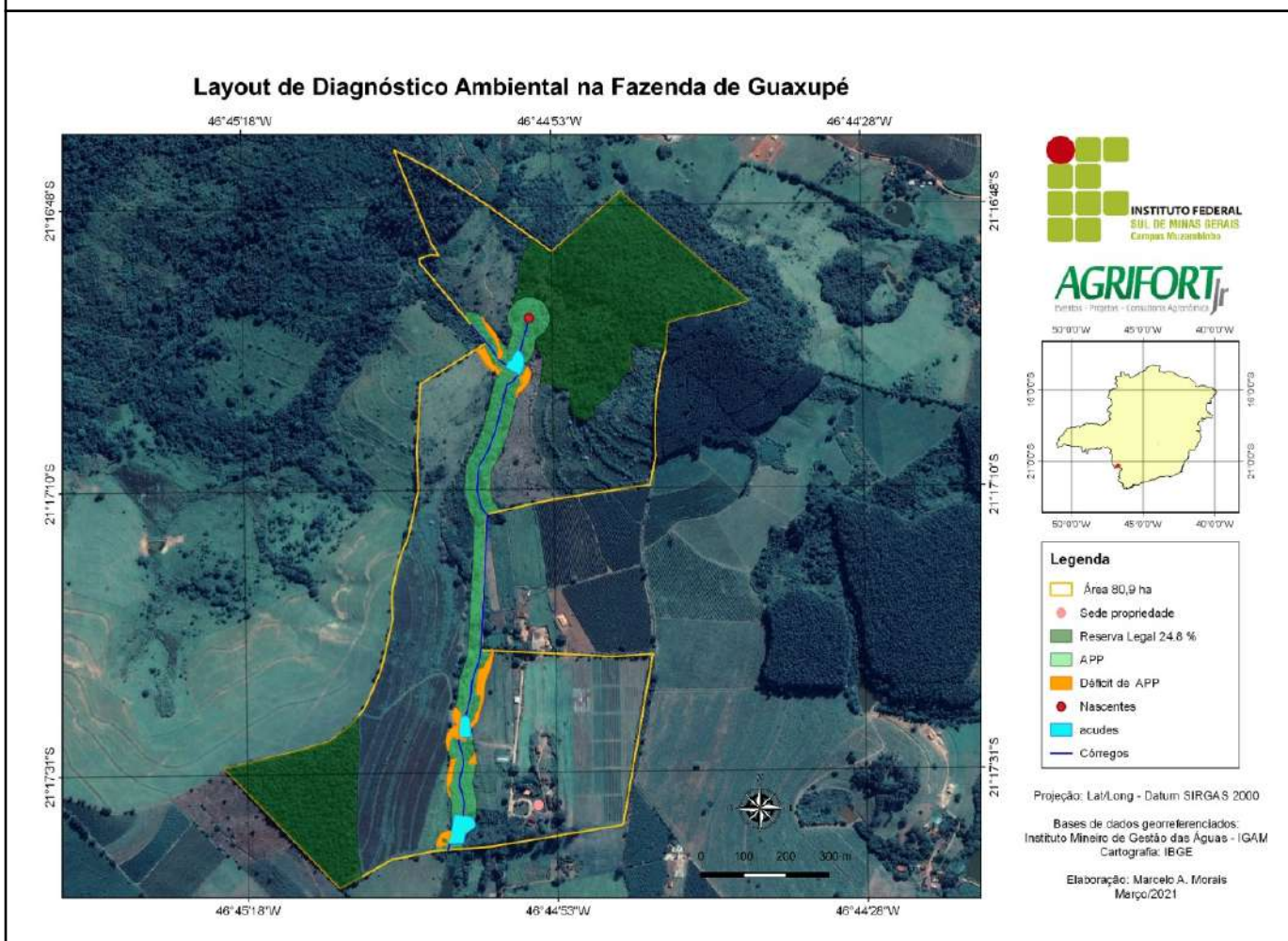


Figure 4: Muzambinho Campus - São Sebastião Farm - 365.607 m<sup>2</sup>.





Figure 5: Carmo de Minas Advanced Campus - 35,328 m<sup>2</sup>. Source: Google Earth.

Campus	Native Vegetation Remnants Areas (m <sup>2</sup> )	Permanent Preservation Areas (m <sup>2</sup> )	Total (m <sup>2</sup> )
Carmo de Minas	0	35.328	35.328
Inconfidentes	511.707	313.530	825.237
Machado	229.074	165.893	394.967
Muzambinho	584.875	248.030	832.905
Guaxupé	288.459	77.148	365.607
<b>Total</b>	<b>1.614.115</b>	<b>839.929</b>	<b>2.415.021</b>

### Description

IFSULDEMINAS have **2,454,044 m<sup>2</sup>** covered in native forest vegetation (native vegetation remnants plus permanent preservation areas), which corresponds to **33,95%** of the total area (attached documents). Source: Institutional Development Directory. Images captured by Google Earth and [SICAR - Sistema Nacional de Cadastro Ambiental Rural](#) (National Rural Environmental Registry System) applications.